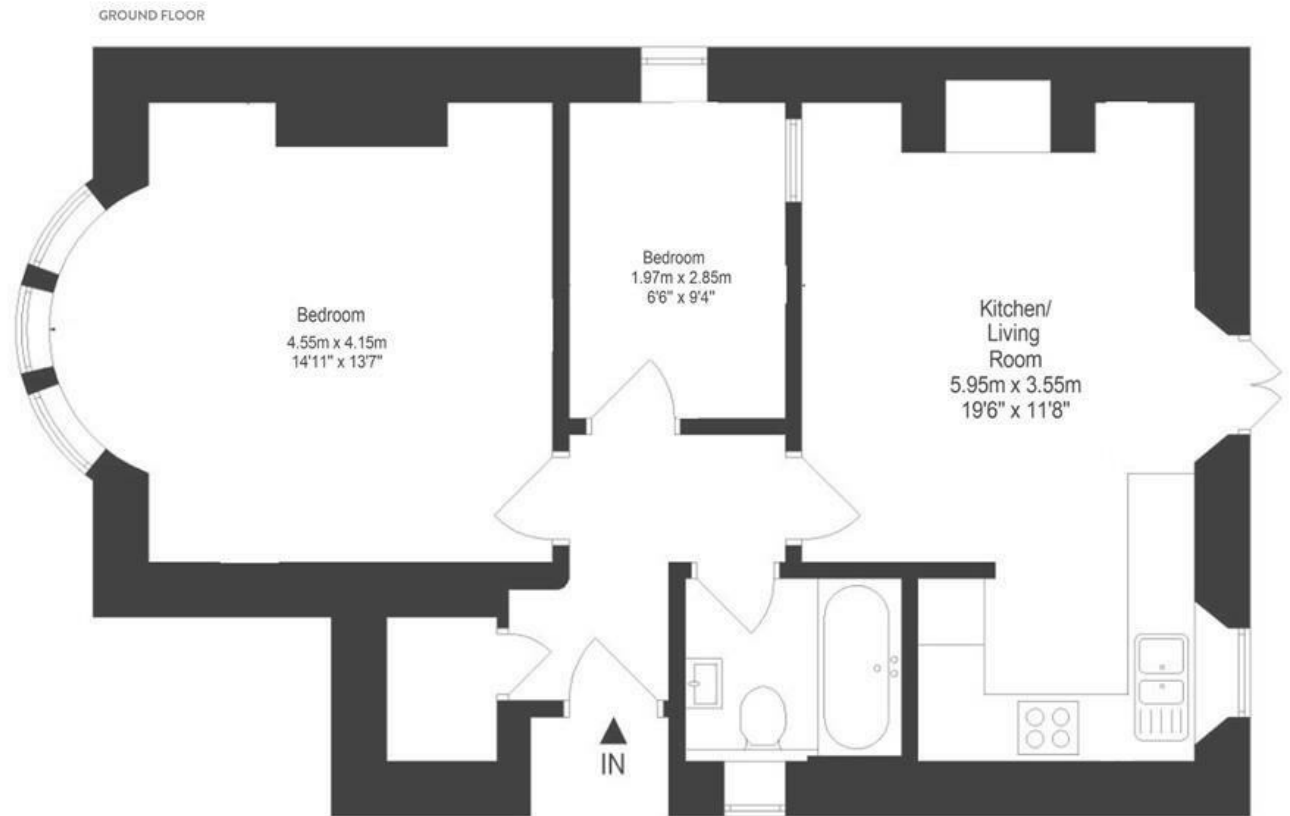


Kingsley Road

COTHAM

APPROXIMATE FLOOR AREA
53.7 SQM / 578 SQFT



Boardwalk

Kingsley Road

COTHAM, BRISTOL



£375,000



2 Bedrooms



BS6 6AF



1 Bathrooms

"It feels like having all of Bristol on your doorstep - gyms, cafes, bars and great food all just a few minutes walk away, but you're also so close to green space and family neighbourhoods that we always felt comfortable no matter the mood. The garden was a game changer, our private retreat in the city."

